

Sample of communications content of control commands via LAN

LAN control protocol : protocol 1 When in [Protect Mode]

Below are the contents of communications with the following settings, when sending a POF (Power-off) Command.

WEB Control Administrator Authorization Username : admin1
 WEB Control Administrator Authorization password : panasonic



PC ← Display : PDPCONTROL 1 [Sequence of 8 random numbers](CR)

P	D	P	C	O	N	T	R	O	L		1		0	1	7	4	7	3	5	b	(CR)
50	44	50	43	4f	4e	54	52	4f	4c	20	31	20	30	31	37	34	37	33	35	62	0d

Bottom row:
ASCII Code

PC → Display : [32-character MD5 hash value](STX)POF(ETX)(CR)

e	a	7	e	a	3	1	e	5	7	f	4	5	1	5	b	c	1	1	a	2	5
65	61	37	65	61	33	31	65	35	37	66	34	35	31	35	62	63	31	31	61	32	35
e	a	2	3	b	1	e	7	a	5	(STX)	P	O	F	(ETX)	(CR)						
65	61	32	33	62	31	65	37	61	35	02	50	4f	46	03	0d						

MD5 Hash seeded with
"0174735bpanasonic"
↓
ea7ea31e57f451bc11a25ea23b1e7a5

PC ← Display : (STX)POF(ETX)(CR)

(STX)	P	O	F	(ETX)	(CR)
02	50	4f	46	03	0d

TCP disconnection

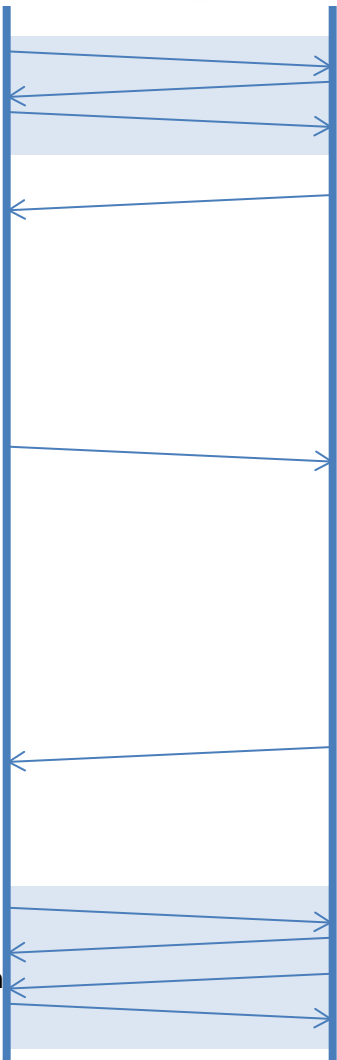
LAN control protocol : protocol 1 When in [Non-protect Mode]

Below are the contents of communications with the following settings, when sending a POF (Power-off) Command.

WEB Control Administrator Authorization Username : admin1
 WEB Control Administrator Authorization password : (None)



TCP connection



PC ← Display : PDPCONTROL 0(CR)

P	D	P	C	O	N	T	R	O	L		0	(CR)
50	44	50	43	4f	4e	54	52	4f	4c	20	30	0d

Bottom row:
ASCII Code

PC → Display : (STX)POF(ETX)(CR)

(STX)	P	O	F	(ETX)	(CR)
02	50	4f	46	03	0d

PC ← Display : (STX)POF(ETX)(CR)

(STX)	P	O	F	(ETX)	(CR)
02	50	4f	46	03	0d

TCP disconnection

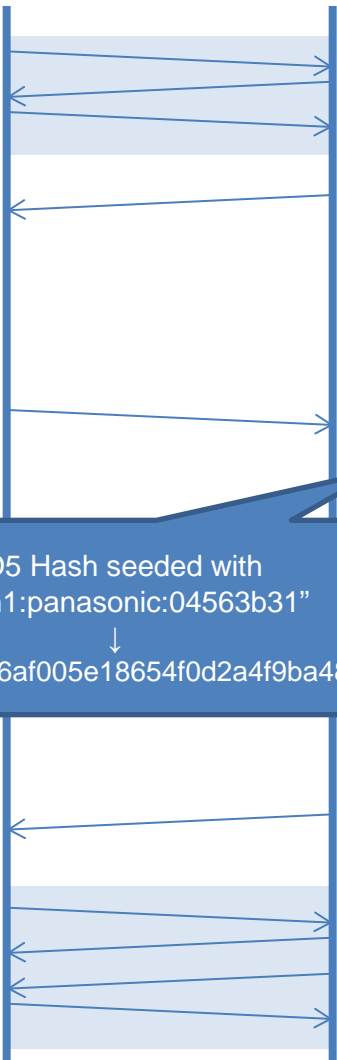
LAN control protocol : protocol 2 When in [Protect Mode]

Below are the contents of communications with the following settings, when sending a POF (Power-off) Command.

WEB Control Administrator Authorization Username : admin1
 WEB Control Administrator Authorization password : panasonic



TCP connection



PC ← Display : NTCONTROL 1 [Sequence of 8 random numbers](CR)

N	T	C	O	N	T	R	O	L		1		0	4	5	6	3	b	3	1	(CR)
4e	54	43	4f	4e	54	52	4f	4c	20	31	20	30	34	35	36	33	62	33	31	0d

Bottom row:
ASCII Code

PC → Display : [32-character MD5 hash value]00POF(CR)

d	1	1	4	c	8	4	9	6	a	f	0	0	5	e	1	8	6	5	4	f	0
64	31	31	34	63	38	34	39	36	61	66	30	30	35	65	31	38	36	35	34	66	30
d	2	a	4	f	9	b	a	4	8	0	0	P	O	F	(CR)						
64	32	61	34	66	39	62	61	34	38	30	30	50	4f	46	0d						

MD5 Hash seeded with
"admin1:panasonic:04563b31"
↓
d114c8496af005e18654f0d2a4f9ba48

PC ← Display : 00POF(CR)

0	0	P	O	F	(CR)
30	30	50	4f	46	0d

TCP disconnection

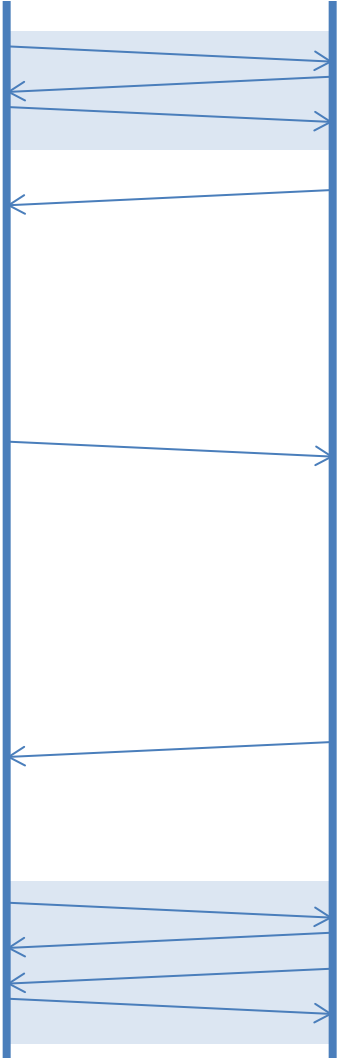
LAN control protocol : protocol 2 When in [Non-protect Mode]



Below are the contents of communications with the following settings, when sending a POF (Power-off) Command.

WEB Control Administrator Authorization Username : admin1
 WEB Control Administrator Authorization password : (None)

TCP connection



PC ← Display : NTCONTROL 0(CR)

N	T	C	O	N	T	R	O	L		0	(CR)
4e	54	43	4f	4e	54	52	4f	4c	20	30	0d

Bottom row: ASCII Code

PC → Display : 00POF(CR)

0	0	P	O	F	(CR)
30	30	50	4f	46	0d

PC ← Display : 00POF(CR)

0	0	P	O	F	(CR)
30	30	50	4f	46	0d

TCP disconnection