

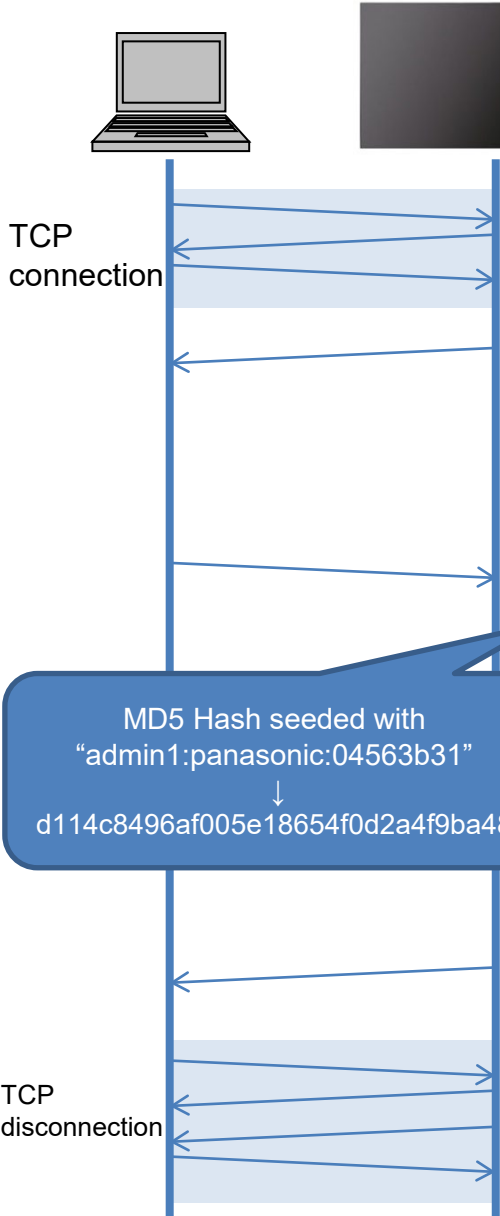
Sample of command
communication via LAN
for SQE2 series/CQE2 series

NTCONTROL

LAN command sequence [Protect Mode]

Below are the contents of communications with the following settings, when sending a POF (Power-off) Command.

Command Control Settings > Command Protect : On
 Administrator Account > Username : admin1
 Administrator Account > Password : panasonic
 (Username / password is tentative.)



PC ← Display : NTCONTROL 1 [Sequence of 8 random numbers](CR)

N	T	C	O	N	T	R	O	L		1		0	4	5	6	3	b	3	1	(CR)
4e	54	43	4f	4e	54	52	4f	4c	20	31	20	30	34	35	36	33	62	33	31	0d

Bottom row:
ASCII Code

PC → Display : [32-character MD5 hash value]00POF(CR)

d	1	1	4	c	8	4	9	6	a	f	0	0	5	e	1	8	6	5	4	f	0
64	31	31	34	63	38	34	39	36	61	66	30	30	35	65	31	38	36	35	34	66	30
d	2	a	4	f	9	b	a	4	8	0	0	P	O	F	(CR)						
64	32	61	34	66	39	62	61	34	38	30	30	50	4f	46	0d						

MD5 Hash seeded with
 "admin1:panasonic:04563b31"
 ↓
 d114c8496af005e18654f0d2a4f9ba48

PC ← Display : 00POF(CR)

0	0	P	O	F	(CR)
30	30	50	4f	46	0d

TCP disconnection

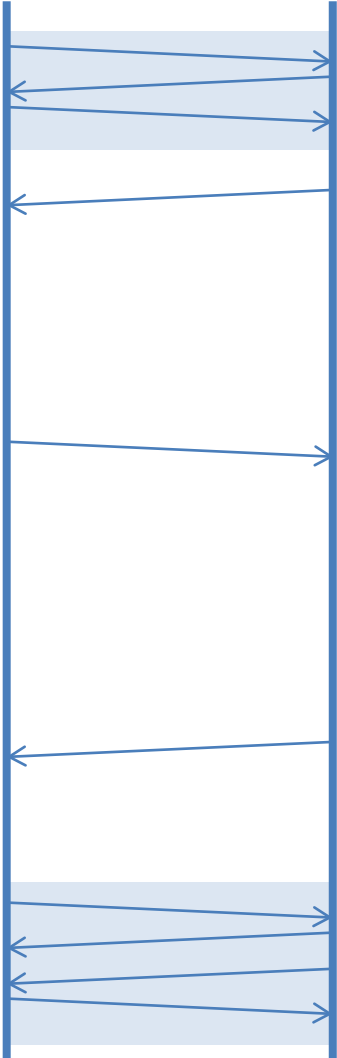
LAN command sequence [Non-protect Mode]



Below are the contents of communications with the following settings, when sending a POF (Power-off) Command.

Command Control Settings > Command Protect : Off

TCP connection



PC ← Display : NTCONTROL 0(CR)

N	T	C	O	N	T	R	O	L		0	(CR)
4e	54	43	4f	4e	54	52	4f	4c	20	30	0d

Bottom row: ASCII Code

PC → Display : 00POF(CR)

0	0	P	O	F	(CR)
30	30	50	4f	46	0d

PC ← Display : 00POF(CR)

0	0	P	O	F	(CR)
30	30	50	4f	46	0d

TCP disconnection