

## Cloud Solution

## Remotely Managed Service

*Note: Service availability may vary by country or region.*

No more guesswork.  
Minimize downtime while  
maintaining and supporting  
consistently high performance.



*Note: Availability of services varies by country or region. For more information, please click [here](https://docs.connect.panasonic.com/projector/support/) or visit <https://docs.connect.panasonic.com/projector/support/> to contact a sales representative in your area.*

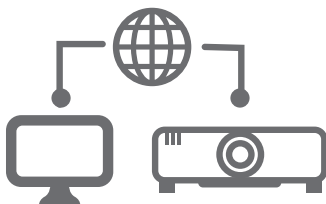
## What is Remotely Managed Service?

Remotely Managed Service is a cloud-based solution that transforms how you manage your projection system. Monitor device status anywhere, any time, maintain image quality automatically or remotely, and use performance data to visualize brightness degradation and plan maintenance or renewal in advance to ensure consistent, high-quality operation.

### Services

#### Core Service

#### Monitoring



Monitor and troubleshoot  
devices remotely via PC or  
mobile browser

#### Add-on Service

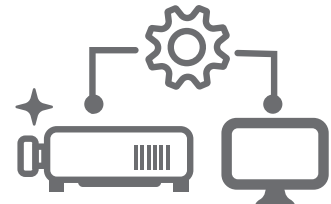
#### Image Adjustment



Maintain the quality of  
blended or stacked images  
automatically or remotely

#### Add-on Service

#### Brightness Maintenance



Ensure stable performance  
with predictive brightness  
analysis

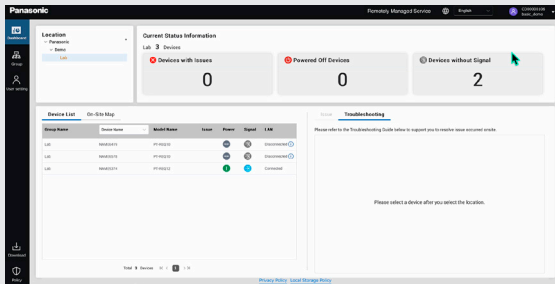
*Note: Add-on services are paid options and may require separately sold peripheral equipment. Some monitoring functionality may be limited depending on the projector model. For more details, please click [here](#) to contact a sales representative in your area.*

## Core Service

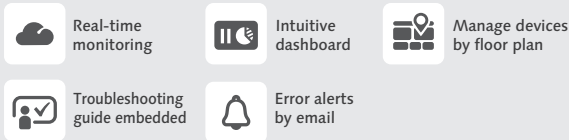
# Monitoring Service

## Monitoring Basic Free

Provides an overview of device status and a troubleshooting guide.



### Key Features



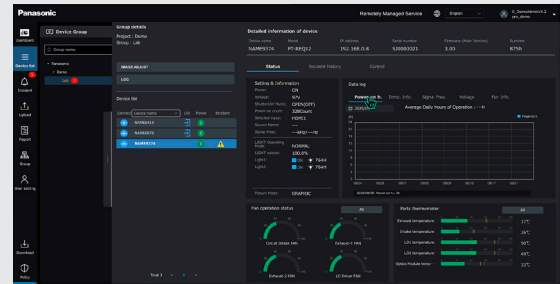
Click for more details



Or visit: <https://docs.connect.panasonic.com/projector/products/rms/monitoring/#basic>

## Monitoring Pro Paid

Details on device status, operating conditions, incident history, and more.



### Includes all basic features, PLUS:



Click for more details



Or visit: <https://docs.connect.panasonic.com/projector/products/rms/monitoring/#pro>

## Add-on Services

# Image Adjustment Service Paid

Note: This add-on requires Monitoring Pro.

Maintains blended or stacked alignment via auto or remote image correction.

### How it works

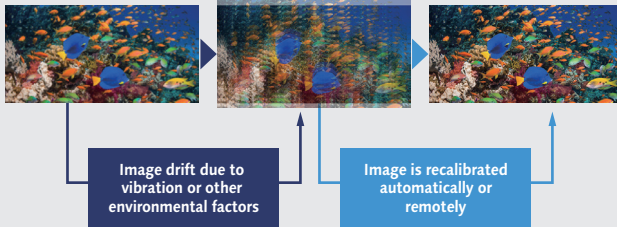


Image adjustment service uses single or multiple cameras to recalibrate either automatically on a set schedule or remotely by an expert technician.

Note: The UI screens shown are under development. Actual specifications and displayed content are subject to change without notice. Some monitoring functionality may be limited depending on the projector model. Models compatible with troubleshooting guide will be updated sequentially. Image Adjustment Service requires camera(s) and peripherals (sold separately) and an initial on-site verification by a Panasonic technician to confirm suitability. For more details on compatible projectors, cameras, and peripheral equipment, regional service availability, and service pricing, please click here or visit <https://docs.connect.panasonic.com/projector/support/> to contact us.

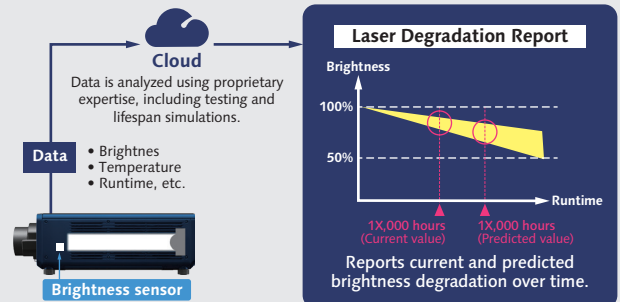
# Brightness Maintenance Service Paid

Note: This add-on requires Monitoring Basic or Monitoring Pro.

Maintain stable performance with predictive brightness analysis.

### Expert Data Analysis for Tailored Brightness Maintenance

By analyzing projector data—such as brightness, temperature, and runtime—our experts generate accurate laser brightness degradation reports using proprietary manufacturer knowledge.



Contact us for details



# Panasonic



Specifications and appearance are subject to change without notice. Availability of services, products, and accessories may vary by country or region. Products may be subject to export control regulations. "Panasonic" is a registered trademark of Panasonic Holdings Corporation and is used under license from Panasonic Holdings Corporation. All other trademarks are the property of the respective trademark owners. © Panasonic Projector & Display Corporation 2026.

For more information about Panasonic projectors, please visit:

Projector Global Website – <https://docs.connect.panasonic.com/projector/>  
 Facebook – [www.facebook.com/panasonicprojectoranddisplay](https://www.facebook.com/panasonicprojectoranddisplay)  
 YouTube – [www.youtube.com/user/PanasonicProjector](https://www.youtube.com/user/PanasonicProjector)  
 LinkedIn – <https://www.linkedin.com/company/panasonic-projector-and-display/>  
 X – [https://x.com/Panasonic\\_PND/](https://x.com/Panasonic_PND/)

All information included here is valid as of December 2025.

RMS\_G3 Printed in Japan.