

Software

Preliminary as of June 2025

Visual Software Suite 2.0

Available from CY2025 Q3

Note: Product availability may vary by country or region.

Visual Software Suite 2.0: A Free, Integrated Platform to Transform Your Workflow

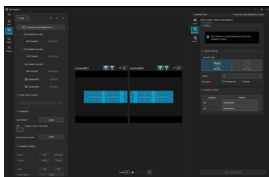


What is Visual Software Suite 2.0?



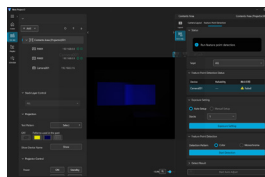
Visual Software Suite 2.0 (VSS 2.0) is a free, Windows®-based platform that combines multiple functions into one intuitive graphical interface, enabling swift and efficient setup and onsite adjustments. Integrating and enhancing the capabilities of previously separate Panasonic software, it transforms your workflow into streamlined and cost-effective processes.

Software Highlights



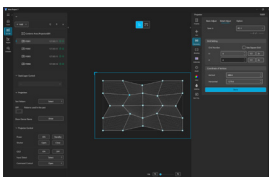
Intuitive User Interface

- Simple to learn and master
- Easy navigation through four screens in operational order



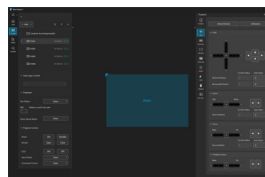
Auto Calibration

- Auto blending, black level adjustment, color matching, and content splitting¹
- Click to define the image projection area
- Works with one or more Nikon or IDS cameras²



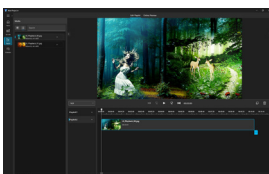
Warping & Color Adjustment

- Distortion correction, detail adjustment, free-shape masking
- Uniformity, color, brightness adjustment and control



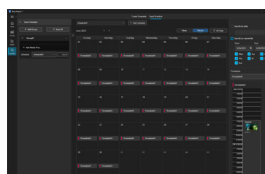
Projector Control

- Lens shift, zoom, focus, and peripheral focus³
- Projector settings access via browser
- Power on/standby, shutter open/close
- Test pattern selection
- Command control, etc.



Playback Management¹

- Supports multiple playlists
- Supports gapless media looping to prevent screen blanking
- Supports playback via external UDP commands
- Preview content on PC screen or projection screen

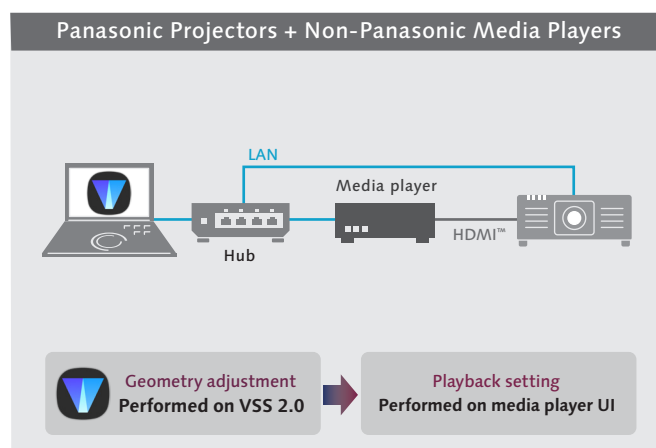
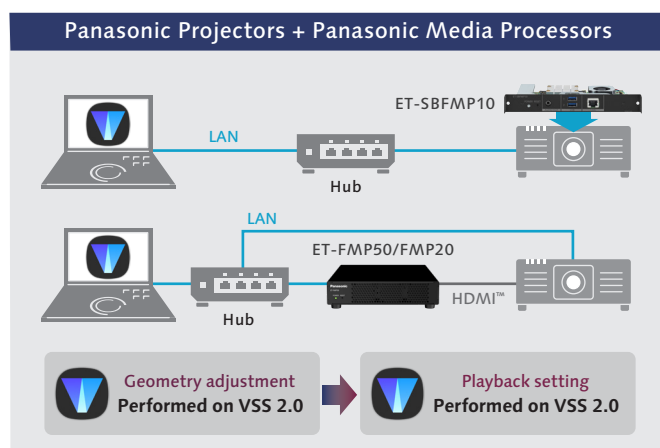


Automation & Scheduling¹

- Create custom schedules for automated daily playback
- Simple, intuitive, labor-saving operation

¹ Described functions require use with an optional ET-FMP50 Series media processor. ² Compatible cameras (sold separately) comprise NIKON D5200/D5300/D5500/D5600/D5700/Z50/Z5 and the IDS GV-5890CP-C-HQ. Please visit PASS for more information.
³ Function supported on compatible projectors only. Please consult individual product specification for more information.

Use Cases



Projector and Software Compatibility

Projector + VSS 2.0

Current models	Previous models
PT-RQ50K	PT-RQ32K/RZ31K/RS30K
PT-RQ35K2/RZ34K2/RQ35K/RZ34K	PT-RQ22K/RZ21K/RS20K
PT-RQ25K/RZ24K/RQ18K/RZ17K	PT-RZ16K/RQ13K/RZ12K/RS11K
PT-RZ14K	PT-RCQ10/RCQ80
PT-REQ15/REQ12/REQ10/REQ80	PT-RZ120
PT-REZ15/REZ12/REZ10/REZ80	PT-RZ990/RZ890/RZ790/RZ690
PT-RQ7/RQ6/RZ7/RZ6	PT-RZ970/RZ870/RZ770/RZ670/RZ660
PT-MZ20K/MZ17K/MZ14K/MZ11K	PT-MZ16K/MZ13K/MZ10K

Projector + FMP50 Series + VSS 2.0

When Using ET-FMP50/FMP20 (Box Type)

All Panasonic projectors and professional displays

When Using ET-SBFMP10 (Function Board Type)

Panasonic projectors with an Intel® SDM standard-compatible slot

Intel® SDM standard-compatible models

PT-RQ25K/RZ24K/RQ18K/RZ17K

PT-RZ14K

PT-REQ15/REQ12/REQ10/REQ80

PT-REZ15/REZ12/REZ10/REZ80

PT-RQ7/RQ6/RZ7/RZ6



Stay tuned for more details coming soon!

Panasonic

Specifications and appearance are subject to change without notice. Availability of products and accessories may vary by country or region. Products may be subject to export control regulations. Intel and the Intel logo are trademarks of Intel Corporation or its subsidiaries. Windows® is either a registered trademark or trademark of Microsoft Corporation in the United States and/or other countries. "Panasonic" is a registered trademark of Panasonic Holdings Corporation and is used under license from Panasonic Holdings Corporation. All other trademarks are the property of the respective trademark owners. © Panasonic Projector & Display Corporation 2025.



For more information about Panasonic projectors, please visit:

Projector Global Website – <https://docs.connect.panasonic.com/projector/>

Facebook – www.facebook.com/panasonicprojectoranddisplay

YouTube – www.youtube.com/user/PanasonicProjector

LinkedIn – <https://www.linkedin.com/company/panasonic-projector-and-display/>

X – https://x.com/Panasonic_PND/

All information included here is valid as of June 2025.

VSS20_PRE1 Printed in Japan.